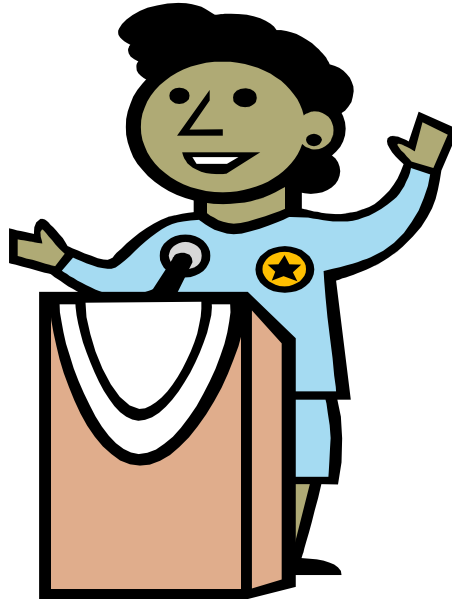


SPEECH



Students deliver both a prepared and an impromptu speech.

Speech is a subjective test, independently scored by two judges and the scores are averaged.

Speech scores are NOT subject to appeal.

All Test Answer Sheets are the sole property of WIAD and are not released to contestants, school officials, or to the general public.

WISCONSIN ACADEMIC DECATHLON

SPEECH — RULES AND PROCEDURES OF THE CONTEST

At a scheduled time during the competition, each student will report to a speech room in which the student will remain for approximately 8 minutes. A chairperson of the judges will give a brief explanation of the procedures to be followed.

Students must wear their ID Name Badges for all events.

Judges will verify Name/ID # with student.

First: 3½ - 4 Minute Prepared Speech

Presentation of a 4-minute prepared speech on an open topic.

At the signal from the timekeeper/judge, begin your speech.

Purpose: To develop the skill of speaking informatively or persuasively on a topic without using visual materials.

Definition: The burden of the speaker is to present well-developed material, which may have the primary intent of either informing or persuading the audience on a significant topic or issue. The speech is to be coherent, unified and clear. A range of support materials and devices can include quotations, statistics, examples, comparisons and analogies.

Prepared Speech Rules

1. Note cards may be used. Notes must be in topical outline form.
2. The speech may **not** be read.
3. The speech must be given from a standing position (unless student is physically unable) before the judges; lecterns are not always available.
4. Speeches must be the **original work of the student** performing the speech and may not have been used for any other competition other than this year's Academic Decathlon. **Sources should be cited; plagiarism is prohibited.**
5. Students on the same team must use different topics.
6. **No props** may be used during the speech — which includes attire and/or accessories.
7. The school should not be identified in any manner in the course of either speech -- by informal conversation, speech content, apparel or insignia.
8. The speech must be no less than 3½ minutes or more than 4 minutes in length. The judges will assess penalties for all infractions of speech rules.

After student has spoken for three minutes, the timer/judge will show a card with **1 MINUTE LEFT (yellow)**. That is the time student has remaining. When student has spoken another 30 seconds, the timer/judge will hold up a card indicating **30 SECONDS LEFT (pink)**. At this point, the student has reached the minimum time limit of the prepared speech.

Timing is an important factor in the speech score. Student could be penalized **70 points** if the prepared speech is over or under time and penalized up to **50 points** if the speech is read.

Note: Student may request that the timing cards not be displayed during the prepared and impromptu speeches.

Point System: A maximum of 700 points can be earned for the Prepared Speech.

Following the Prepared Speech, student will move into the second phase of the speech contest, which is impromptu speaking.

Second: 1½ - 2 Minute Impromptu Speech

Presentation of a 1½ to 2-minute impromptu speech on one of three topics following the prepared speech. The judge will hand the student a sheet that contains three (3) topics. Upon receipt of the topics, student has 30 seconds to decide which topic they will speak on. The student is then given 1 minute for mental preparation for their impromptu speech.

Student should notify the judges of the topic chosen. On a signal from the timer/judge, student will begin speaking for a period of 2 minutes. At the 1½-minute mark, the timer/judge will hold up a **30 SECONDS LEFT** (pink) warning sheet. This indicates the student has completed the required minimum of 1½ minutes and has an additional 30 seconds to conclude the impromptu speech.

Purpose: To develop skills in locating and recalling information that can be brought to bear in the construction of a clear and coherent message in a relatively short period of time.

Definition: The burden of the participant is to phrase a clear proposition and support it with contentions that are in turn supported with evidence and reasoning directly related to the questions or issue chosen.

Impromptu Speech Rules

1. Impromptu must be given from a standing position (unless student is physically unable) before the judges; lecterns are not always available.
2. The student may use notes made on note card.
3. The speech should last between 1½ and 2 minutes. If speech is shorter than 1 minute 15 seconds **or** longer than 2 minutes 15 seconds, the penalty is **30 points**.
4. The school should **not** be identified in any manner in the course of either speech.

Point system: A maximum of 300 points can be earned for the Impromptu Speech.

At the conclusion of the impromptu, student will leave the speech room and return to the area team is assigned.

PLEASE NOTE: Each year the impromptu topics change.

New topics are issued periodically throughout the contest.

Impromptu Topics are NOT to be divulged to anyone while students are testing.

~ Criteria ~

The student will be scored on their ability to do the following:

1. Organize ideas in a clear and logical pattern that is appropriate for the speaker's purpose and is convincing to the audience.
2. Express ideas using effective vocabulary and the structures of the English language appropriate to formal usage.
3. Present a physical image that aids the audience in the acceptance of the spoken ideas.
4. Use pitch, volume, and flexibility to establish and maintain maximum attention.

In addition, the speech will be judged on the following:

- a. Ideas, originality of thought, and sense of value
- b. Overall impression