

# Eclipse Curriculum Manager



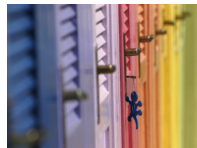
## **Common Core**

- Wisconsin has adopted the Common Core State Standards in Math and ELA. With Eclipse...
- ⇒ The Common Core State Standards are available for selection by teachers during unit planning.
  - ⇒ Professional interpretation of each ELA and Mathematics standard available for import into Eclipse units (add-on option).



## **Organization**

- Districts normally have curriculum in binders, file cabinets, in shared directories on the computer, and everywhere in between. With Eclipse...
- ⇒ All curriculum is in one spot; one URL/website
  - ⇒ Teachers can see all of their active courses on the main page
  - ⇒ All curriculum is on one site where everyone can view/analyze it
  - ⇒ Can upload digital documents right to the site



## **Customization**

- There is no one size fits all, so the ability to customize is important for each district. With Eclipse...
- ⇒ We work with districts to develop a custom curriculum template
  - ⇒ Districts can customize their own public/community site
  - ⇒ Districts have additional flexibility/customization with features within the site, such as subject areas, time units, etc.



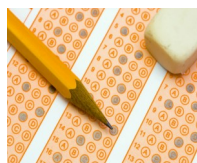
## **Ease of Use**

- Teachers already have enough on their plate, and districts would like to integrate a program and not add on top of it. With Eclipse...
- ⇒ With only a few clicks of the mouse, teachers can view all their courses, add new units, and enter content.
  - ⇒ With the ease of use of Eclipse, training time is minimized with a majority of teachers walking away from a 2 hour session feeling very comfortable with the basic functionality of Eclipse



## **Curriculum Improvement**

- Curriculum mapping is used to look at improving the curriculum. With Eclipse...
- ⇒ Districts can run reports to see frequency and coverage of state, WKCE, local standards
  - ⇒ Districts can run reports on when units are being covered over multiple time units
  - ⇒ Districts can run reports on specifics within their maps (i.e. essential questions, resources, etc.)



## **Item Analyzer**

- Along with curriculum development, districts use data to help analyze their curriculum...
- ⇒ This piece is unique to Eclipse in that we provide the WKCE aggregated student scores with the ability to run reports from the data to see where in your curriculum maps you have covered specific WKCE assessment frameworks.

